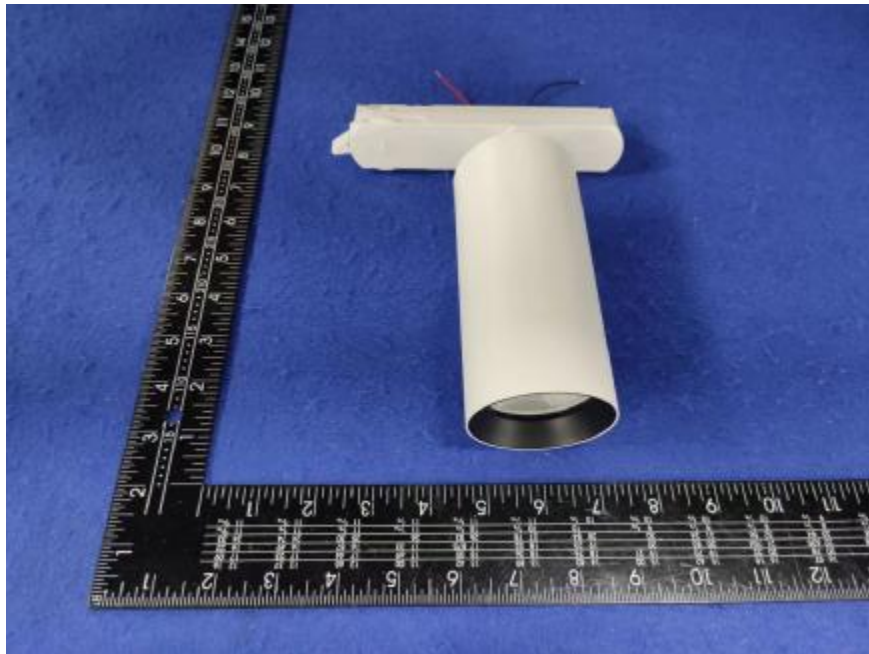


Luminaire Photograph



Light Output Ratio:	87.9%	
Luminaire Power:	15.9 W	
SHR Nominal:	0.00	Calculated using the TM5
SHR Maximum:	0.30	fine grid method.

C Range: 0 - 360DEG
C Interval: 30.0DEG
Test Speed: HIGH
Temperature: 25.3 °C
Operators: zoe
Test Date: 2024-4-7

Range: 0 - 180DEG
Interval: 1.0DEG
Test System: EVERFINE GO-SPEX500_V1 SYSTEM V2.00.461
Humidity: 65.0%
Test Distance: 3.160m [K=1.0000]
Remarks: LAMP: BXRE-40G10TH-A-83 Ra: 90
LENS: PM-0132 15R
DRIVER: SC42W300-1050CG-4W 400mA
30minutes warm-up

LUMINOUS INTENSITY DISTRIBUTION DIAGRAM

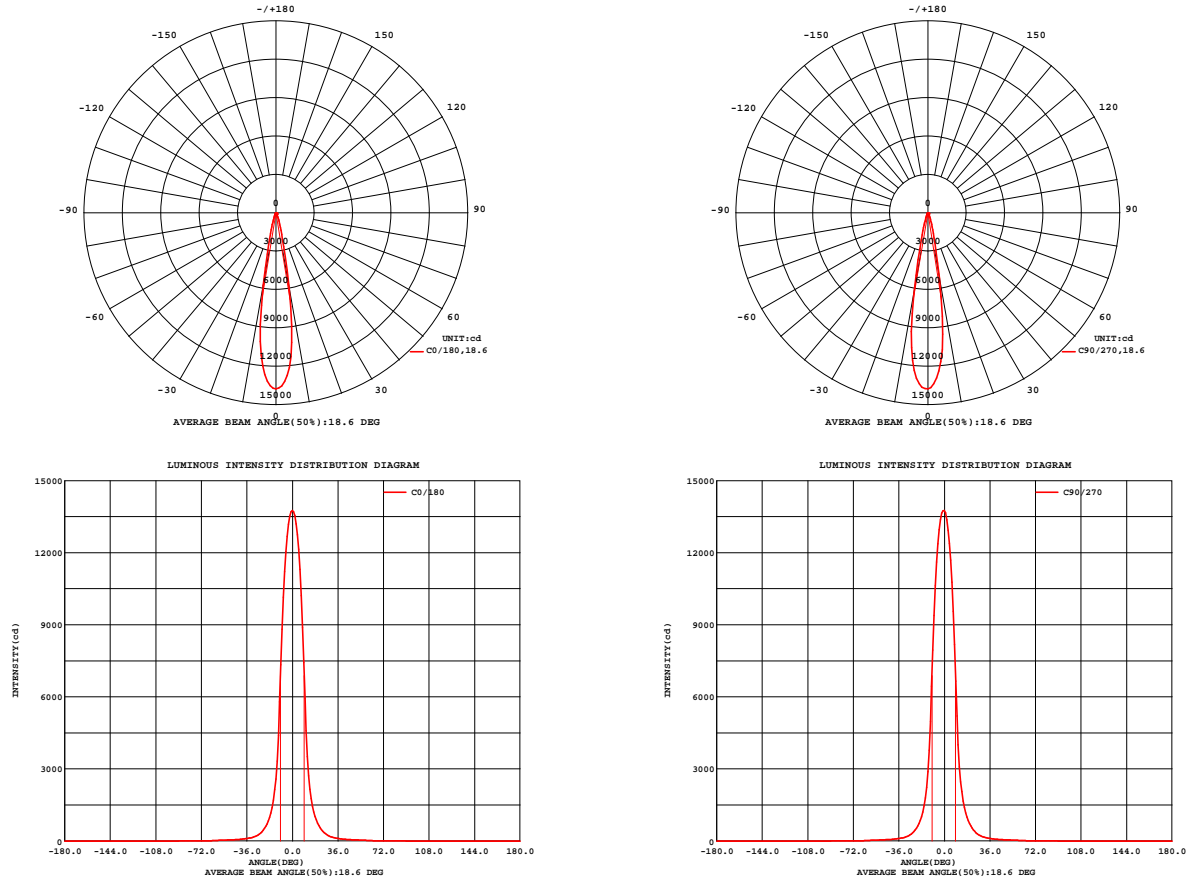


Fig. C0/C180

Fig. C90/C270

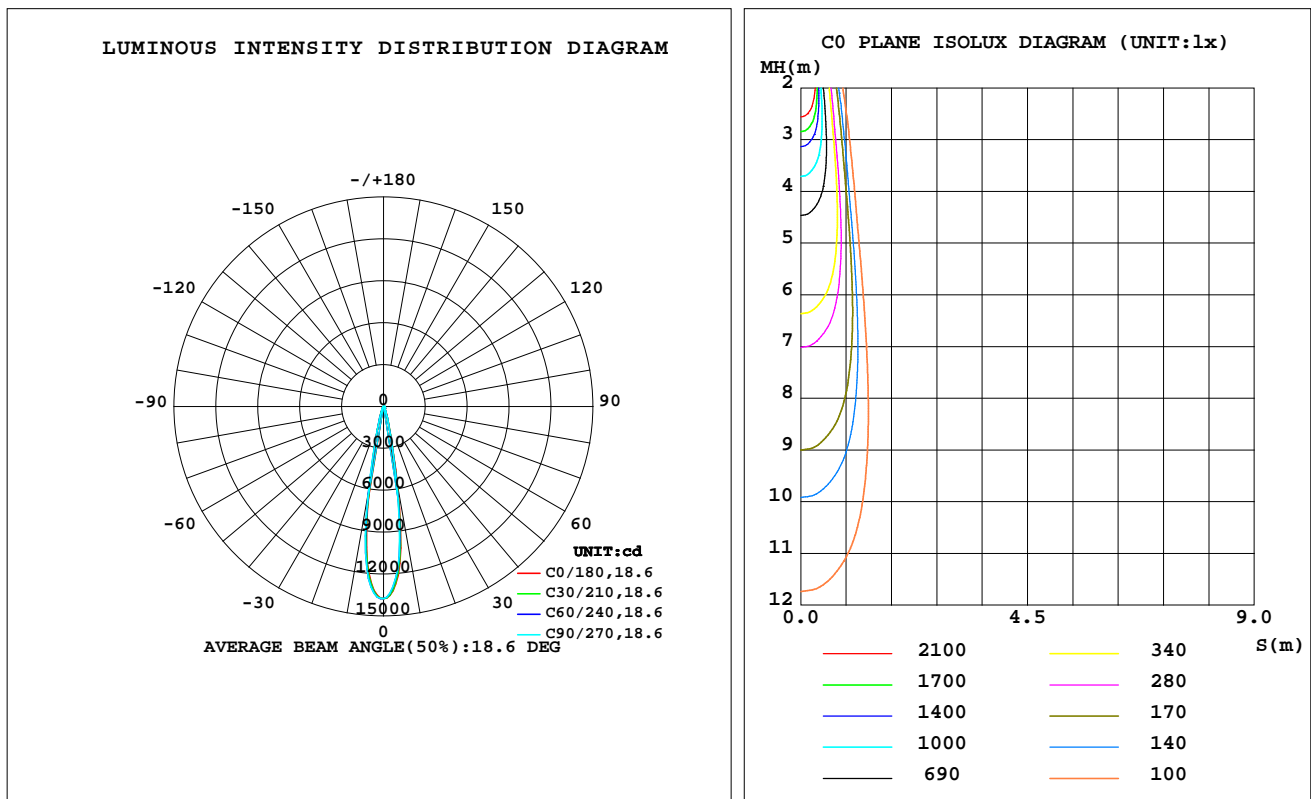
C Range: 0 - 360DEG
C Interval: 30.0DEG
Test Speed: HIGH
Temperature: 25.3 °C
Operators: zoe
Test Date: 2024-4-7

Range: 0 - 180DEG
Interval: 1.0DEG
Test System: EVERFINE GO-SPEX500_V1 SYSTEM V2.00.461
Humidity: 65.0%
Test Distance: 3.160m [K=1.0000]
Remarks: LAMP: BXRE-40G10TH-A-83 Ra: 90
LENS: PM-0132 15R
DRIVER: SC42W300-1050CG-4W 400mA
30minutes warm-up

LUMINAIRE PHOTOMETRIC TEST REPORT

Test:U:220.12V I:0.0792A P:15.904W PF:0.9084 Freq:49.99Hz Lamp Flux:2089x1 lm		
NAME: 2319.200-UA-400-HE	TYPE:	WEIGHT:
SPEC.: 4000K	DIM.:	SERIAL No.: 2404070257
MFR.: RISE	SUR.: 0.002826m2	Shielding Angle:

DATA OF LAMP		PHOTOMETRIC DATA Eff: 115.51 lm/W			
MODEL	Brideglux	Imax(cd)	13757	S/MH(C0/180)	0.29
NOMINAL POWER(W)	16	LOR(%)	87.9	S/MH(C90/270)	0.30
RATED VOLTAGE(V)	220	TOTAL FLUX(lm)	1837.1	UP,DN(C0-180)	0.0,43.0
NOMINAL FLUX(lm)	2089	CIE CLASS	DIRECT	UP,DN(C180-360)	0.0,45.0
LAMPS INSIDE	1	up(%)	0.0	CIBSE SHR NOM	0.00
TEST VOLTAGE(V)	220	down(%)	87.9	CIBSE SHR MAX	0.30



C Range: 0 - 360DEG
C Interval: 30.0DEG
Test Speed: HIGH
Temperature:25.3℃
Operators:zoe
Test Date:2024-4-7

Range: 0 - 180DEG
Interval: 1.0DEG
Test System:EVERFINE GO-SPEX500_V1 SYSTEM V2.00.461
Humidity:65.0%
Test Distance:3.160m [K=1.0000]
Remarks: LAMP:BXRE-40G10TH-A-83 Ra:90
LENS:PM-0132 15R
DRIVER:SC42W300-1050CG-4W 400mA
30minutes warm-up

ZONAL FLUX DIAGRAM

ZONAL FLUX DIAGRAM:

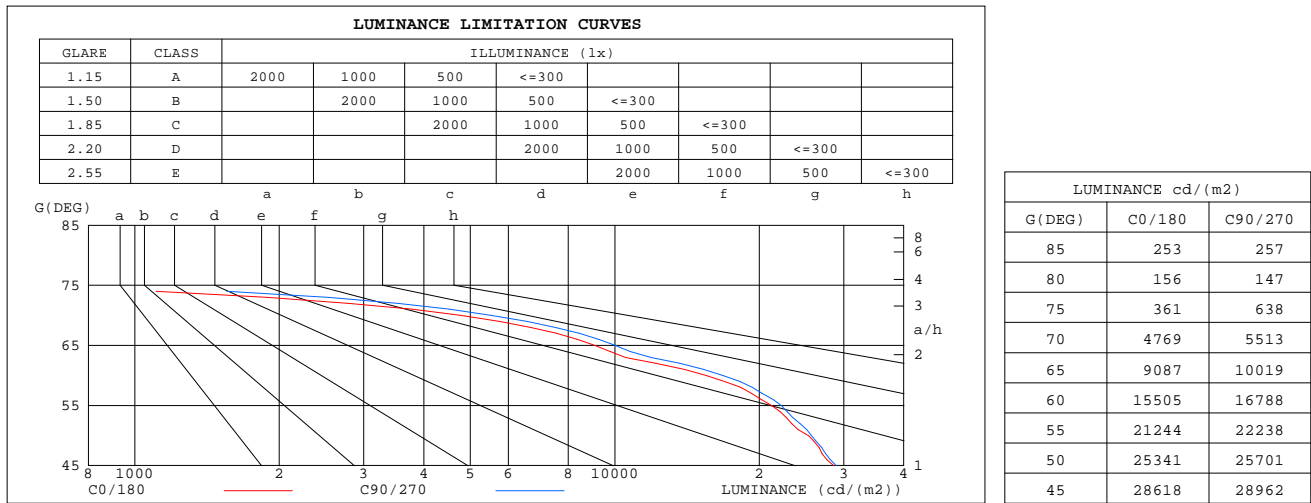
	C0	C45	C90	C135	C180	C225	C270	C315		zone	total	%lum,lamp
10	593.0	548.1	520.2	535.0	578.4	617.7	644.7	625.5	0- 10	948.8	948.8	51.6,45.4
20	74.32	72.55	72.85	71.62	70.59	70.31	72.10	73.40	10- 20	559.8	1509	82.1,72.2
30	18.57	18.27	17.98	17.35	17.40	17.29	17.63	17.95	20- 30	167.0	1676	91.2,80.2
40	7.809	7.925	7.747	7.503	7.485	7.533	7.610	7.656	30- 40	72.73	1748	95.2,83.7
50	4.597	4.794	4.670	4.596	4.414	4.481	4.447	4.521	40- 50	44.89	1793	97.6,85.8
60	2.188	2.349	2.373	2.286	2.165	2.179	2.164	2.156	50- 60	30.60	1824	99.3,87.3
70	0.4604	0.5018	0.5330	0.5112	0.4743	0.4913	0.4988	0.4714	60- 70	11.94	1836	99.9,87.9
80	0.0077	0.0052	0.0072	0.0053	0.0060	0.0039	0.0057	0.0036	70- 80	1.328	1837	100,87.9
90	0	0	0	0	0	0	0	0	80- 90	0.0403	1837	100,87.9
100	0	0	0	0	0	0	0	0	90-100	0	1837	100,87.9
110	0	0	0	0	0	0	0	0	100-110	0	1837	100,87.9
120	0	0	0	0	0	0	0	0	110-120	0	1837	100,87.9
130	0	0	0	0	0	0	0	0	120-130	0	1837	100,87.9
140	0	0	0	0	0	0	0	0	130-140	0	1837	100,87.9
150	0	0	0	0	0	0	0	0	140-150	0	1837	100,87.9
160	0	0	0	0	0	0	0	0	150-160	0	1837	100,87.9
170	0	0	0	0	0	0	0	0	160-170	0	1837	100,87.9
180	0	0	0	0	0	0	0	0	170-180	0	1837	100,87.9
DEG	LUMINOUS INTENSITY:X10cd									UNIT:lm		

C Range: 0 - 360DEG
C Interval: 30.0DEG
Test Speed: HIGH
Temperature:25.3℃
Operators:zoe
Test Date:2024-4-7

Range: 0 - 180DEG
Interval: 1.0DEG
Test System:EVERFINE GO-SPEX500_V1 SYSTEM V2.00.461
Humidity:65.0%
Test Distance:3.160m [K=1.0000]
Remarks: LAMP:BXRE-40G10TH-A-83 Ra:90
LENS:PM-0132 15R
DRIVER:SC42W300-1050CG-4W 400mA
30minutes warm-up

LUMINANCE LIMITATION CURVES

Test:U:220.12V I:0.0792A P:15.904W PF:0.9084 Freq:49.99Hz Lamp Flux:2089x1 lm		
NAME: 2319.200-UA-400-HE	TYPE:	WEIGHT:
SPEC.: 4000K	DIM.:	SERIAL No.: 2404070257
MFR.: RISE	SUR.: 0.002826m2	Shielding Angle:



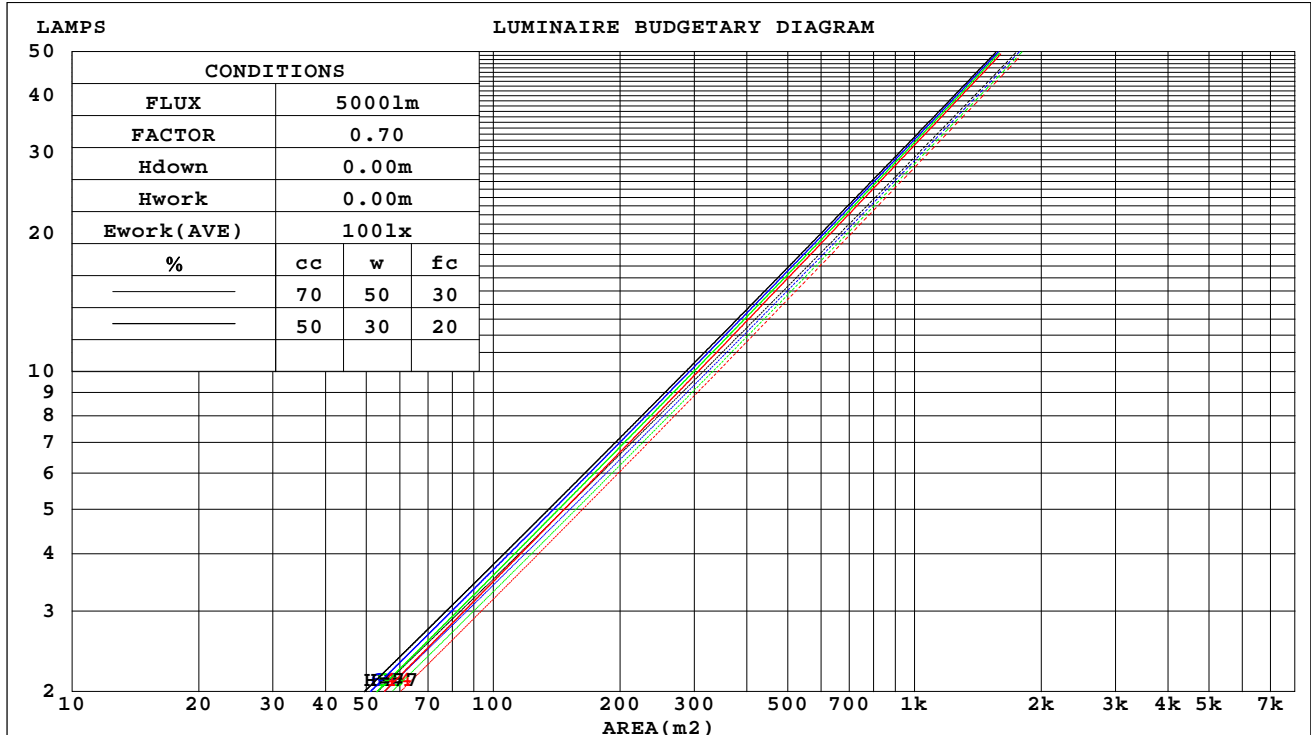
C Range: 0 - 360DEG
C Interval: 30.0DEG
Test Speed: HIGH
Temperature:25.3℃
Operators:zoe
Test Date:2024-4-7

Range: 0 - 180DEG
Interval: 1.0DEG
Test System:EVERFINE GO-SPEX500_V1 SYSTEM V2.00.461
Humidity:65.0%
Test Distance:3.160m [K=1.0000]
Remarks: LAMP:BXRE-40G10TH-A-83 Ra:90
LENS:PM-0132 15R
DRIVER:SC42W300-1050CG-4W 400mA
30minutes warm-up

CU AND LUMINAIRE BUDGETARY ESTIMATE DIAGRAM

Test:U:220.12V I:0.0792A P:15.904W PF:0.9084 Freq:49.99Hz Lamp Flux:2089x1 lm		
NAME: 2319.200-UA-400-HE	TYPE:	WEIGHT:
SPEC.: 4000K	DIM.:	SERIAL No.: 2404070257
MFR.: RISE	SUR.: 0.002826m2	Shielding Angle:

cc	80%			70%			50%			30%			10%			0
w	50%	30%	10%	50%	30%	10%	50%	30%	10%	50%	30%	10%	50%	30%	10%	0
fc	20%			20%			20%			20%			20%			0
RCR	RCR:Room Cavity Ratio															



C Range: 0 - 360DEG
C Interval: 30.0DEG
Test Speed: HIGH
Temperature:25.3℃
Operators:zoe
Test Date:2024-4-7

Range: 0 - 180DEG
Interval: 1.0DEG
Test System:EVERFINE GO-SPEX500_V1 SYSTEM V2.00.461
Humidity:65.0%
Test Distance:3.160m [K=1.0000]
Remarks: LAMP:BXRE-40G10TH-A-83 Ra:90
LENS:PM-0132 15R
DRIVER:SC42W300-1050CG-4W 400mA
30minutes warm-up



WEC AND CCEC

Test:U:220.12V I:0.0792A P:15.904W PF:0.9084 Freq:49.99Hz Lamp Flux:2089x1 lm		
NAME: 2319.200-UA-400-HE	TYPE:	WEIGHT:
SPEC.: 4000K	DIM.:	SERIAL No.: 2404070257
MFR.: RISE	SUR.: 0.002826m2	Shielding Angle:

cc	80%			70%			50%			30%			10%			0	
w	50%	30%	10%	50%	30%	10%	50%	30%	10%	50%	30%	10%	50%	30%	10%	0	
fc	20%			20%			20%			20%			20%			0	
RCR	RCR:Room Cavity Ratio						Wall Exitance Coefficients(WEC)										
0.0																	
1.0	.116	.066	.021	.110	.063	.020	.099	.057	.018	.089	.052	.017	.080	.046	.015		
2.0	.108	.059	.018	.103	.057	.017	.094	.052	.016	.086	.048	.015	.078	.044	.014		
3.0	.100	.053	.016	.096	.051	.015	.088	.048	.015	.081	.045	.014	.075	.042	.013		
4.0	.093	.048	.014	.090	.047	.014	.083	.044	.013	.078	.042	.013	.072	.039	.012		
5.0	.087	.044	.013	.084	.043	.013	.079	.041	.012	.074	.039	.012	.069	.037	.011		
6.0	.082	.041	.012	.079	.040	.012	.075	.038	.011	.070	.037	.011	.066	.035	.010		
7.0	.077	.038	.011	.075	.037	.011	.071	.036	.010	.067	.034	.010	.064	.033	.010		
8.0	.073	.036	.010	.071	.035	.010	.067	.034	.010	.064	.033	.009	.061	.031	.009		
9.0	.069	.033	.009	.067	.033	.009	.064	.032	.009	.062	.031	.009	.059	.030	.009		
10.0	.066	.031	.009	.064	.031	.009	.062	.030	.008	.059	.029	.008	.057	.029	.008		

cc	80%			70%			50%			30%			10%			0
w	50%	30%	10%	50%	30%	10%	50%	30%	10%	50%	30%	10%	50%	30%	10%	0
fc	20%			20%			20%			20%			20%			0
RCR	RCR:Room Cavity Ratio			Ceiling Cavity Exitance Coefficients(CCEC)												
0.0	.168	.168	.168	.143	.143	.143	.098	.098	.098	.056	.056	.056	.018	.018	.018	
1.0	.148	.139	.131	.126	.119	.112	.086	.082	.078	.050	.047	.045	.016	.015	.015	
2.0	.132	.117	.104	.113	.100	.090	.077	.070	.063	.045	.040	.037	.014	.013	.012	
3.0	.118	.100	.085	.101	.086	.074	.070	.060	.052	.040	.035	.030	.013	.011	.010	
4.0	.107	.086	.070	.092	.074	.061	.063	.052	.043	.036	.030	.025	.012	.010	.008	
5.0	.097	.075	.059	.084	.065	.051	.058	.045	.036	.033	.027	.021	.011	.009	.007	
6.0	.089	.066	.050	.077	.057	.043	.053	.040	.031	.031	.024	.018	.010	.008	.006	
7.0	.082	.059	.043	.071	.051	.037	.049	.036	.026	.028	.021	.016	.009	.007	.005	
8.0	.076	.053	.037	.065	.046	.032	.045	.032	.023	.026	.019	.014	.009	.006	.004	
9.0	.071	.048	.032	.061	.041	.028	.042	.029	.020	.025	.017	.012	.008	.006	.004	
10.0	.066	.043	.028	.057	.038	.025	.040	.027	.017	.023	.016	.010	.007	.005	.003	

C Range: 0 - 360DEG
C Interval: 30.0DEG
Test Speed: HIGH
Temperature:25.3℃
Operators:zoe
Test Date:2024-4-7

Range: 0 - 180DEG
Interval: 1.0DEG
Test System:EVERFINE GO-SPEX500_V1 SYSTEM V2.00.461
Humidity:65.0%
Test Distance:3.160m [K=1.0000]
Remarks: LAMP:BXRE-40G10TH-A-83 Ra:90
LENS:PM-0132 15R
DRIVER:SC42W300-1050CG-4W 400mA
30minutes warm-up

UGR(Unified Glare Rating) Table

Test:U:220.12V I:0.0792A P:15.904W PF:0.9084 Freq:49.99Hz Lamp Flux:2089x1 lm										
NAME: 2319.200-UA-400-HE					TYPE:			WEIGHT:		
SPEC.: 4000K					DIM.:			SERIAL No.: 2404070257		
MFR.: RISE					SUR.: 0.002826m2			Shielding Angle:		
ceiling/cavity	0.7	0.7	0.5	0.5	0.3	0.7	0.7	0.5	0.5	0.3
walls	0.5	0.3	0.5	0.3	0.3	0.5	0.3	0.5	0.3	0.3
working plane	0.2	0.2	0.2	0.2	0.2	0.2	0.2	0.2	0.2	0.2
Room dimensions	Viewed crosswise					Viewed endwise				
x = 2H y = 2H	13.7	14.3	13.9	14.4	14.6	13.7	14.3	13.9	14.5	14.6
3H	13.8	14.3	14.0	14.5	14.7	13.9	14.4	14.1	14.6	14.8
4H	13.7	14.2	14.0	14.4	14.7	13.8	14.4	14.1	14.6	14.8
6H	13.6	14.1	13.9	14.4	14.6	13.7	14.2	14.0	14.5	14.7
8H	13.6	14.1	13.9	14.3	14.6	13.7	14.2	14.0	14.4	14.7
12H	13.5	14.0	13.8	14.3	14.5	13.6	14.1	13.9	14.4	14.6
4H 2H	13.8	14.4	14.1	14.6	14.8	13.9	14.4	14.1	14.6	14.8
3H	13.9	14.4	14.2	14.7	14.9	14.0	14.5	14.3	14.8	15.0
4H	13.8	14.3	14.2	14.6	14.9	13.9	14.4	14.3	14.7	15.0
6H	13.7	14.1	14.1	14.4	14.8	13.8	14.2	14.2	14.5	14.9
8H	13.7	14.0	14.1	14.4	14.7	13.8	14.1	14.2	14.5	14.8
12H	13.6	14.0	14.0	14.3	14.7	13.7	14.1	14.1	14.4	14.8
8H 4H	13.7	14.1	14.1	14.4	14.8	13.8	14.2	14.2	14.5	14.9
6H	13.6	13.9	14.0	14.3	14.7	13.7	14.0	14.1	14.4	14.8
8H	13.5	13.8	13.9	14.2	14.6	13.6	13.9	14.0	14.3	14.7
12H	13.4	13.7	13.9	14.1	14.6	13.5	13.8	14.0	14.2	14.7
12H 4H	13.6	14.0	14.0	14.3	14.7	13.7	14.1	14.1	14.4	14.8
6H	13.5	13.8	13.9	14.2	14.6	13.6	13.9	14.0	14.3	14.7
8H	13.4	13.7	13.9	14.1	14.6	13.5	13.8	14.0	14.2	14.7
Variations with the observer position at spacings(CIE Pub.117):										
S = 1.0H	+ 0.9 / - 1.5					+ 0.9 / - 1.3				
1.5H	+ 0.9 / - 0.8					+ 0.8 / - 0.8				
2.0H	+ 1.4 / - 3.3					+ 1.4 / - 3.2				

CIE Pub.117, 2089 lm Total Lamp Luminous Flux Correct (8log(F/F0) = 2.6)
Area: 0.002826 m2

C Range: 0 - 360DEG
C Interval: 30.0DEG
Test Speed: HIGH
Temperature:25.3℃
Operators:zoe
Test Date:2024-4-7

Range: 0 - 180DEG
Interval: 1.0DEG
Test System:EVERFINE GO-SPEX500_V1 SYSTEM V2.00.461
Humidity:65.0%
Test Distance:3.160m [K=1.0000]
Remarks: LAMP:BXRE-40G10TH-A-83 Ra:90
LENS:PM-0132 15R
DRIVER:SC42W300-1050CG-4W 400mA
30minutes warm-up

UTILIZATION FACTORS TABLE

Test:U:220.12V I:0.0792A P:15.904W PF:0.9084 Freq:49.99Hz Lamp Flux:2089x1 lm		
NAME: 2319.200-UA-400-HE	TYPE:	WEIGHT:
SPEC.: 4000K	DIM.:	SERIAL No.: 2404070257
MFR.: RISE	SUR.: 0.002826m2	Shielding Angle:

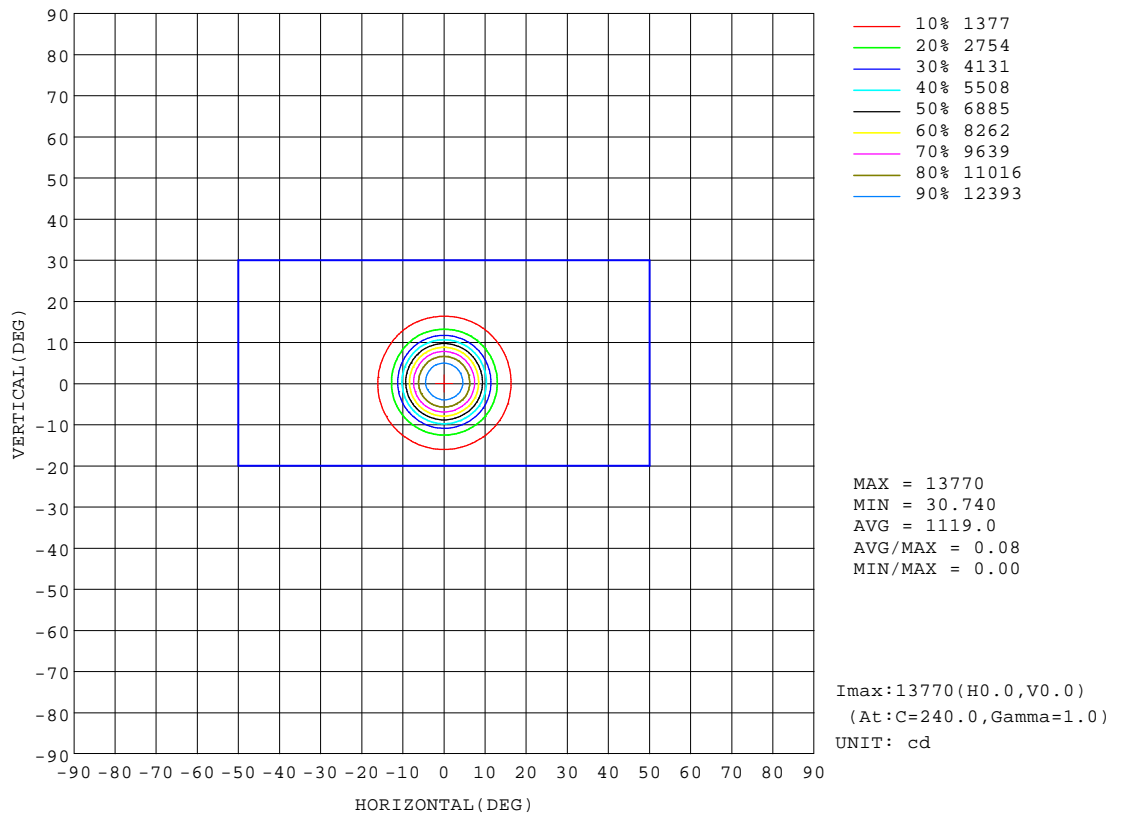
REFLECTANCE										
Ceiling	0.8	0.8	0.8	0.7	0.7	0.7	0.5	0.5	0.5	0
Walls	0.7	0.5	0.3	0.7	0.5	0.3	0.7	0.5	0.3	0
Working plane	0.2	0.2	0.2	0.2	0.2	0.2	0.2	0.2	0.2	0
ROOM INDEX	UTILIZATION FACTORS(PERCENT) $k(RI) \times RCR = 5$									
k = 0.60	78	72	69	77	72	69	77	72	69	66
0.80	84	79	76	84	79	76	83	78	76	73
1.00	88	83	80	87	83	80	86	83	79	76
1.25	91	87	84	90	86	84	89	85	83	79
1.50	94	90	87	93	89	86	91	88	85	82
2.00	96	92	90	95	91	89	92	90	88	83
2.50	97	94	92	96	93	91	93	91	89	84
3.00	99	96	93	97	94	92	94	92	90	85
4.00	100	98	96	99	97	95	95	94	93	86
5.00	101	99	98	100	98	97	96	95	94	87
ROOM INDEX	UF(total)									Direct
According to DIN EN 13032-2 2004			Suspended					SHRNOM = 1.25		

C Range: 0 - 360DEG
C Interval: 30.0DEG
Test Speed: HIGH
Temperature:25.3℃
Operators:zoe
Test Date:2024-4-7

Range: 0 - 180DEG
Interval: 1.0DEG
Test System:EVERFINE GO-SPEX500_V1 SYSTEM V2.00.461
Humidity:65.0%
Test Distance:3.160m [K=1.0000]
Remarks: LAMP:BXRE-40G10TH-A-83 Ra:90
LENS:PM-0132 15R
DRIVER:SC42W300-1050CG-4W 400mA
30minutes warm-up

ISOCANDELA DIAGRAM

Test:U:220.12V I:0.0792A P:15.904W PF:0.9084 Freq:49.99Hz Lamp Flux:2089x1 lm		
NAME: 2319.200-UA-400-HE	TYPE:	WEIGHT:
SPEC.: 4000K	DIM.:	SERIAL No.: 2404070257
MFR.: RISE	SUR.: 0.002826m2	Shielding Angle:

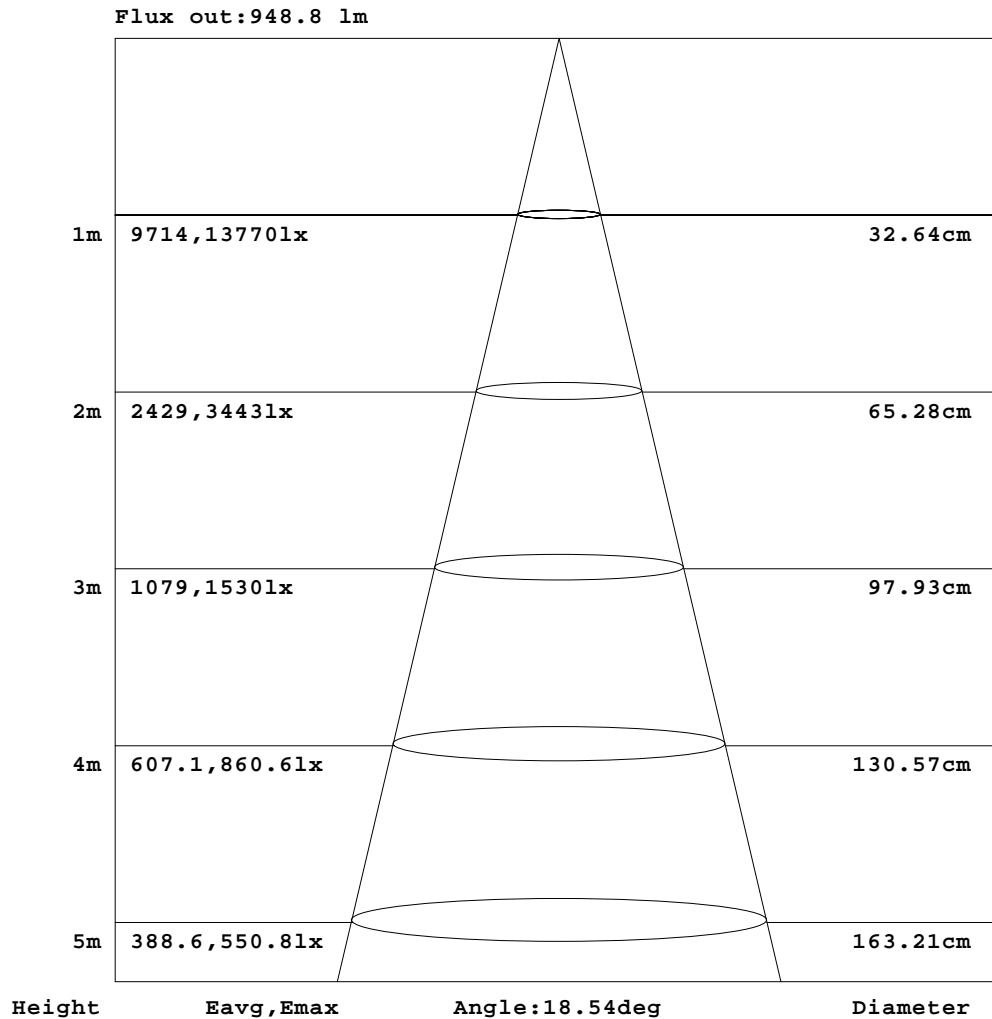


C Range: 0 - 360DEG
C Interval: 30.0DEG
Test Speed: HIGH
Temperature:25.3℃
Operators:zoe
Test Date:2024-4-7

Range: 0 - 180DEG
Interval: 1.0DEG
Test System:EVERFINE GO-SPEX500_V1 SYSTEM V2.00.461
Humidity:65.0%
Test Distance:3.160m [K=1.0000]
Remarks: LAMP:BXRE-40G10TH-A-83 Ra:90
LENS:PM-0132 15R
DRIVER:SC42W300-1050CG-4W 400mA
30minutes warm-up

AAI Figure

Test:U:220.12V I:0.0792A P:15.904W PF:0.9084 Freq:49.99Hz Lamp Flux:2089x1 lm		
NAME: 2319.200-UA-400-HE	TYPE:	WEIGHT:
SPEC.: 4000K	DIM.:	SERIAL No.: 2404070257
MFR.: RISE	SUR.: 0.002826m2	Shielding Angle:



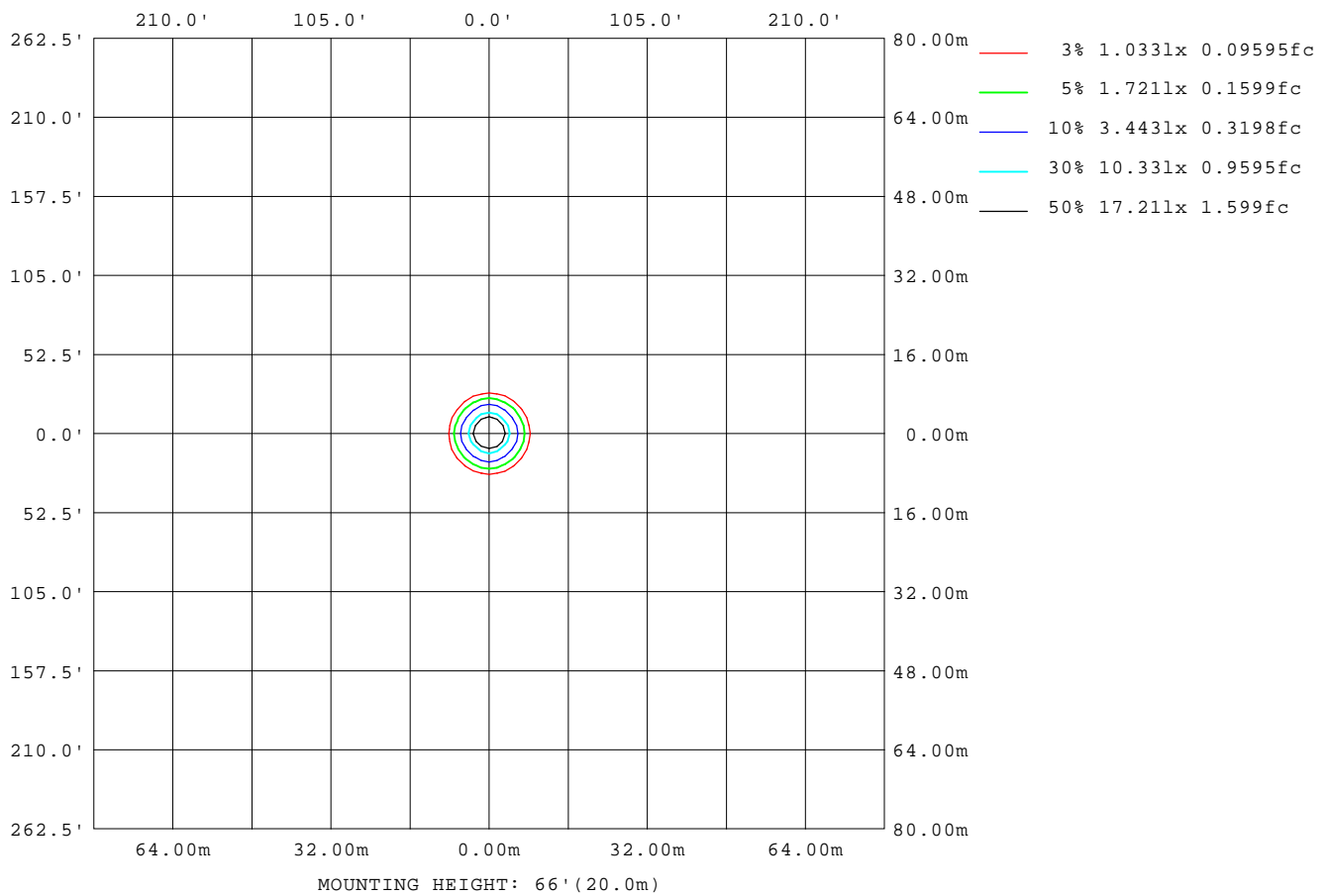
Note:The Curves indicate the illuminated area and the average illumination when the luminaire is at different distance.

C Range: 0 - 360DEG
C Interval: 30.0DEG
Test Speed: HIGH
Temperature:25.3℃
Operators:zoe
Test Date:2024-4-7

Range: 0 - 180DEG
Interval: 1.0DEG
Test System:EVERFINE GO-SPEX500_V1 SYSTEM V2.00.461
Humidity:65.0%
Test Distance:3.160m [K=1.0000]
Remarks: LAMP:BXRE-40G10TH-A-83 Ra:90
LENS:PM-0132 15R
DRIVER:SC42W300-1050CG-4W 400mA
30minutes warm-up

ISOLUX DIAGRAM

Test:U:220.12V I:0.0792A P:15.904W PF:0.9084 Freq:49.99Hz Lamp Flux:2089x1 lm		
NAME: 2319.200-UA-400-HE	TYPE:	WEIGHT:
SPEC.: 4000K	DIM.:	SERIAL No.: 2404070257
MFR.: RISE	SUR.: 0.002826m2	Shielding Angle:



C Range: 0 - 360DEG
C Interval: 30.0DEG
Test Speed: HIGH
Temperature:25.3 °C
Operators:zoe
Test Date:2024-4-7

Range: 0 - 180DEG
Interval: 1.0DEG
Test System:EVERFINE GO-SPEX500_V1 SYSTEM V2.00.461
Humidity:65.0%
Test Distance:3.160m [K=1.0000]
Remarks: LAMP:BXRE-40G10TH-A-83 Ra:90
LENS:PM-0132 15R
DRIVER:SC42W300-1050CG-4W 400mA
30minutes warm-up

LED Avg.L Report

Test:U:220.12V I:0.0792A P:15.904W PF:0.9084 Freq:49.99Hz Lamp Flux:2089x1 lm		
NAME: 2319.200-UA-400-HE	TYPE:	WEIGHT:
SPEC.: 4000K	DIM.:	SERIAL No.: 2404070257
MFR.: RISE	SUR.: 0.002826m2	Shielding Angle:

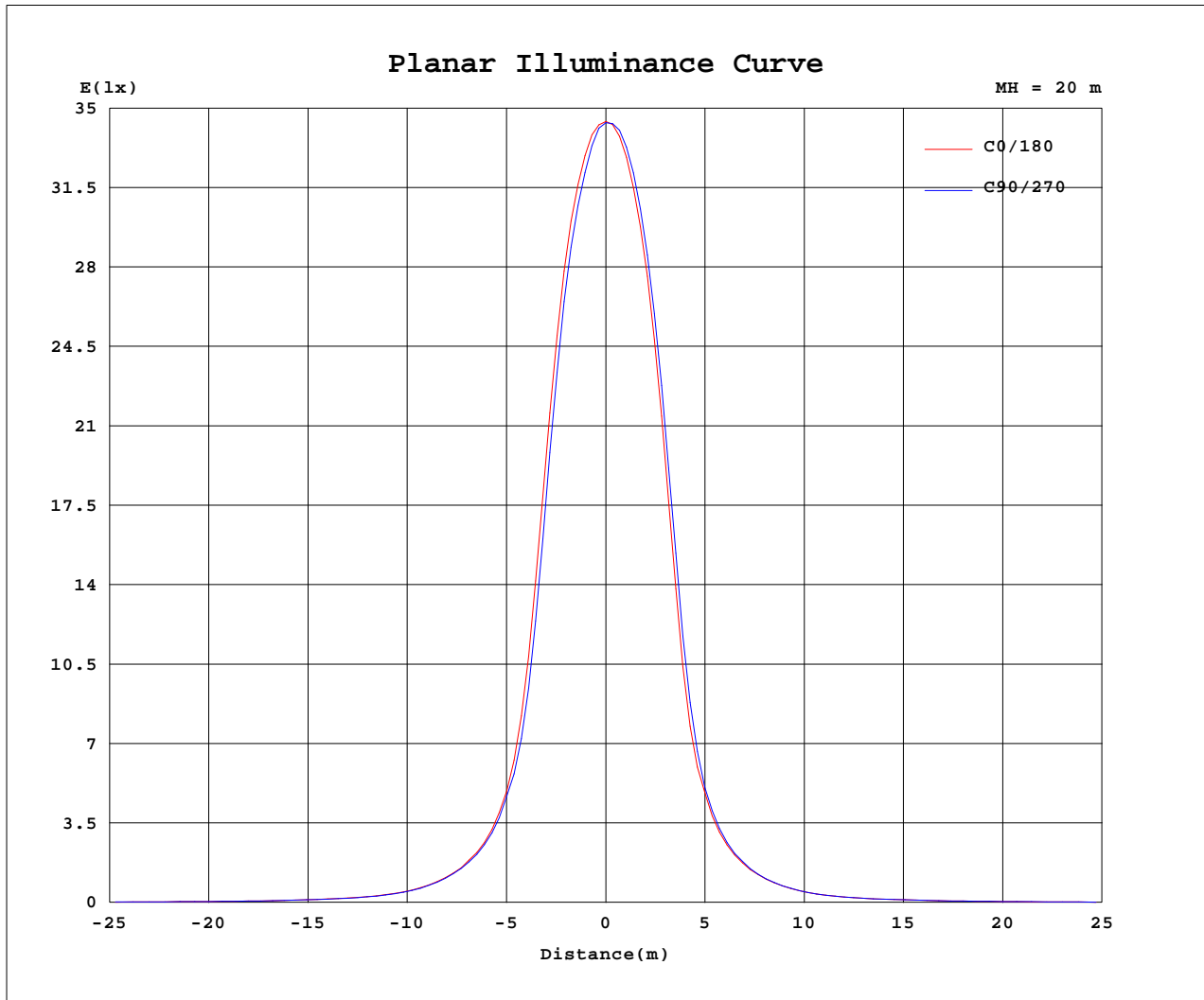
AvgL	cd/m2
L_0~180(65)av	9130
L_0~180(75)av	393
L_0~180(85)av	233
L_90~270(65)av	9802
L_90~270(75)av	543
L_90~270(85)av	229
L_45(65)av	9616
L_45(75)av	399
L_45(85)av	98

Standard: GB/T 29293-2012

C Range: 0 - 360DEG
C Interval: 30.0DEG
Test Speed: HIGH
Temperature:25.3℃
Operators:zoe
Test Date:2024-4-7

Range: 0 - 180DEG
Interval: 1.0DEG
Test System:EVERFINE GO-SPEX500_V1 SYSTEM V2.00.461
Humidity:65.0%
Test Distance:3.160m [K=1.0000]
Remarks: LAMP:BXRE-40G10TH-A-83 Ra:90
LENS:PM-0132 15R
DRIVER:SC42W300-1050CG-4W 400mA
30minutes warm-up

Planar Illuminance Curve



C Range: 0 - 360DEG
 C Interval: 30.0DEG
 Test Speed: HIGH
 Temperature: 25.3 °C
 Operators: zoe
 Test Date: 2024-4-7

Range: 0 - 180DEG
 Interval: 1.0DEG
 Test System: EVERFINE GO-SPEX500_V1 SYSTEM V2.00.461
 Humidity: 65.0%
 Test Distance: 3.160m [K=1.0000]
 Remarks: LAMP: BXRE-40G10TH-A-83 Ra:90
 LENS: PM-0132 15R
 DRIVER: SC42W300-1050CG-4W 400mA
 30minutes warm-up



LUMINOUS DISTRIBUTION INTENSITY DATA

Test:U:220.12V I:0.0792A P:15.904W PF:0.9084 Freq:49.99Hz Lamp Flux:2089x1 lm		
NAME: 2319.200-UA-400-HE	TYPE:	WEIGHT:
SPEC.: 4000K	DIM.:	SERIAL No.: 2404070257
MFR.: RISE	SUR.: 0.002826m2	Shielding Angle:

Table--1

UNIT: X10cd

C(DEG) (DEG)	0	30	60	90	120	150	180	210	240	270	300	330						
0	1375	1375	1375	1375	1375	1375	1375	1375	1375	1375	1375	1375						
5	1214	1199	1175	1169	1172	1186	1203	1214	1235	1237	1233	1222						
10	593	568	529	520	524	546	578	598	638	645	637	614						
15	176	173	166	166	166	169	169	169	184	180	187	179						
20	74.3	73.4	71.7	72.8	71.6	71.6	70.6	68.6	72.0	72.1	73.2	73.6						
25	35.4	35.0	34.1	34.4	33.3	33.5	33.2	32.2	33.7	33.8	34.2	34.7						
30	18.6	18.5	18.0	18.0	17.2	17.5	17.4	17.0	17.6	17.6	17.7	18.2						
35	11.9	12.0	11.7	11.5	11.2	11.4	11.3	11.1	11.4	11.4	11.2	11.7						
40	7.81	8.01	7.84	7.75	7.46	7.55	7.49	7.50	7.57	7.61	7.58	7.73						
45	5.71	5.94	5.87	5.79	5.63	5.61	5.49	5.59	5.63	5.64	5.66	5.69						
50	4.60	4.83	4.75	4.67	4.62	4.57	4.41	4.47	4.49	4.45	4.52	4.53						
55	3.44	3.60	3.63	3.61	3.57	3.46	3.40	3.38	3.43	3.38	3.41	3.35						
60	2.19	2.32	2.38	2.37	2.34	2.23	2.17	2.16	2.20	2.16	2.20	2.12						
65	1.08	1.15	1.19	1.20	1.19	1.12	1.10	1.13	1.17	1.14	1.15	1.07						
70	0.46	0.49	0.51	0.53	0.53	0.49	0.47	0.48	0.51	0.50	0.50	0.45						
75	0.03	0.03	0.03	0.05	0.04	0.04	0.03	0.03	0.03	0.03	0.02	0.02						
80	0.01	0.01	0.01	0.01	0.01	0.01	0.01	0.00	0.00	0.01	0.00	0.00						
85	0.01	0.00	0.00	0.01	0.00	0.00	0.01	0.00	0.00	0.00	0.00	0.00						
90	0.00	0.00	0.00	0.00	0.00	0.00	0.00	0.00	0.00	0.00	0.00	0.00						
95	0.00	0.00	0.00	0.00	0.00	0.00	0.00	0.00	0.00	0.00	0.00	0.00						
100	0.00	0.00	0.00	0.00	0.00	0.00	0.00	0.00	0.00	0.00	0.00	0.00						
105	0.00	0.00	0.00	0.00	0.00	0.00	0.00	0.00	0.00	0.00	0.00	0.00						
110	0.00	0.00	0.00	0.00	0.00	0.00	0.00	0.00	0.00	0.00	0.00	0.00						
115	0.00	0.00	0.00	0.00	0.00	0.00	0.00	0.00	0.00	0.00	0.00	0.00						
120	0.00	0.00	0.00	0.00	0.00	0.00	0.00	0.00	0.00	0.00	0.00	0.00						
125	0.00	0.00	0.00	0.00	0.00	0.00	0.00	0.00	0.00	0.00	0.00	0.00						
130	0.00	0.00	0.00	0.00	0.00	0.00	0.00	0.00	0.00	0.00	0.00	0.00						
135	0.00	0.00	0.00	0.00	0.00	0.00	0.00	0.00	0.00	0.00	0.00	0.00						
140	0.00	0.00	0.00	0.00	0.00	0.00	0.00	0.00	0.00	0.00	0.00	0.00						
145	0.00	0.00	0.00	0.00	0.00	0.00	0.00	0.00	0.00	0.00	0.00	0.00						
150	0.00	0.00	0.00	0.00	0.00	0.00	0.00	0.00	0.00	0.00	0.00	0.00						
155	0.00	0.00	0.00	0.00	0.00	0.00	0.00	0.00	0.00	0.00	0.00	0.00						
160	0.00	0.00	0.00	0.00	0.00	0.00	0.00	0.00	0.00	0.00	0.00	0.00						
165	0.00	0.00	0.00	0.00	0.00	0.00	0.00	0.00	0.00	0.00	0.00	0.00						
170	0.00	0.00	0.00	0.00	0.00	0.00	0.00	0.00	0.00	0.00	0.00	0.00						
175	0.00	0.00	0.00	0.00	0.00	0.00	0.00	0.00	0.00	0.00	0.00	0.00						
180	0.00	0.00	0.00	0.00	0.00	0.00	0.00	0.00	0.00	0.00	0.00	0.00						

C Range: 0 - 360DEG
C Interval: 30.0DEG
Test Speed: HIGH
Temperature:25.3℃
Operators:zoe
Test Date:2024-4-7

Range: 0 - 180DEG
Interval: 1.0DEG
Test System:EVERFINE GO-SPEX500_V1 SYSTEM V2.00.461
Humidity:65.0%
Test Distance:3.160m [K=1.0000]
Remarks: LAMP:BXRE-40G10TH-A-83 Ra:90
LENS:PM-0132 15R
DRIVER:SC42W300-1050CG-4W 400mA
30minutes warm-up